

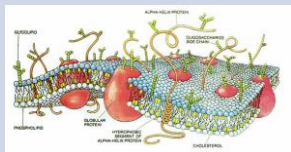
Pharmacy (Integrated)

B.Sc. (Pharm.) / M. Pharm.

Junior Fresh Year 1

Modules

- Physiology
- Cell & Molecular Biology
- Biochemistry
- Organic and Inorganic Chemistry for Pharmacy
- Physical Pharmacy I
- Pharmaceutical Analysis I
- Introduction to Pharmaceutics & Formulation
- Mathematical Methods & Pharmaceutical Calculations
- Practice of Pharmacy I
- General Principles of Pharmacology

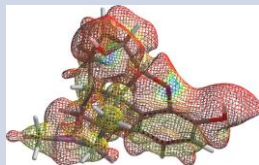


Cell membrane

Senior Fresh Year 2

Modules

- Properties & Analysis of Materials used in Medicines
- Physical Pharmacy, Formulation & Pharmaceutical Technology
- Practice of Pharmacy II
- Pharmaceutical Biochemistry & Biotechnology
- Molecular & Chemotherapeutic Pharmacology and Clinical Therapeutics
- Blood, Cardiovascular & Renal Pharmacology and Clinical Therapeutics

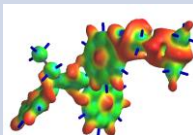


Morphine
Ionisation density map

Junior Sophister Year 3

Modules

- Medicinal & Pharmaceutical Chemistry III
- Natural Sources of Drugs and Substances used in Medicines
- Sterile Products & Advanced Pharmaceutical Biotechnology
- Practice of Pharmacy III
- Endocrine & Reproductive Pharmacology and Clinical Therapeutics
- Respiratory & Gastrointestinal Pharmacology and Clinical Therapeutics
- Malignant Disease, Immunopharmacology & Pharmacology of the Eye and Clinical Therapeutics
- Neuropharmacology and Clinical Therapeutics



Tamoxifen

Senior Sophister Year 4

Modules

- Organisation & Management Skills
- Professional Skills Development
- Professional Practice
- Practice and Therapeutics & Professionalism and Ethics
- Pharmaceutical Data Analysis & Bioinformatics
- Medicinal and Pharmaceutical Chemistry IV
- Pharmacokinetics, Pharmacodynamics, Biopharmaceutics & Drug Metabolism
- Advanced Drug Delivery
- Research Project



Year 5

Modules

- Industrial Pharmacy
- Complementary & Alternative Medicine: Context, Legislation, Standards and Practice
- Advanced Drug Delivery & Molecular Pharmaceutics
- Addiction Pharmacy
- Practice of Pharmacy & Integrated Pharmacy Skills
- Supply of Medicines and Organisation & Management Skills
- Leading the Safe and Rational Use of Medicines
- Professional Practice and Public Health
- Practice Research Project



The model of pharmacist education and training was changed in Ireland in 2015 with the introduction of the five-year Pharmacy (Integrated) programme (see <http://www.thepsi.ie>).

This programme will provide a greater level of practical learning in workplace settings, with placement periods in years 2, 4 and 5 of the studies.

Students who successfully complete year 4 will be awarded the B.Sc.(Pharm.) and may progress into a postgraduate fifth year which leads to the award of a M.Pharm.

